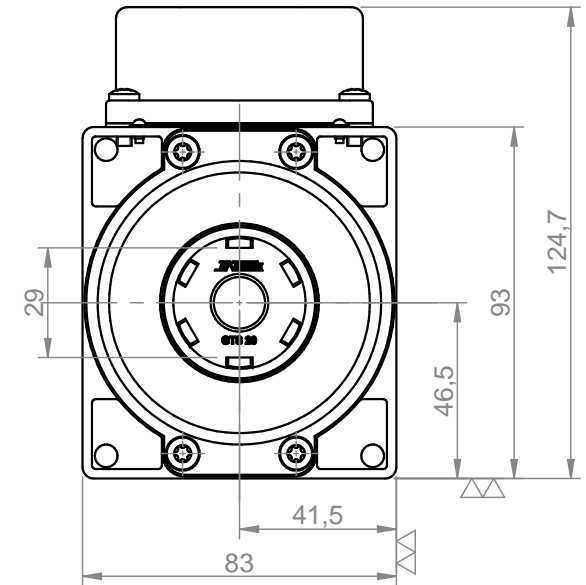
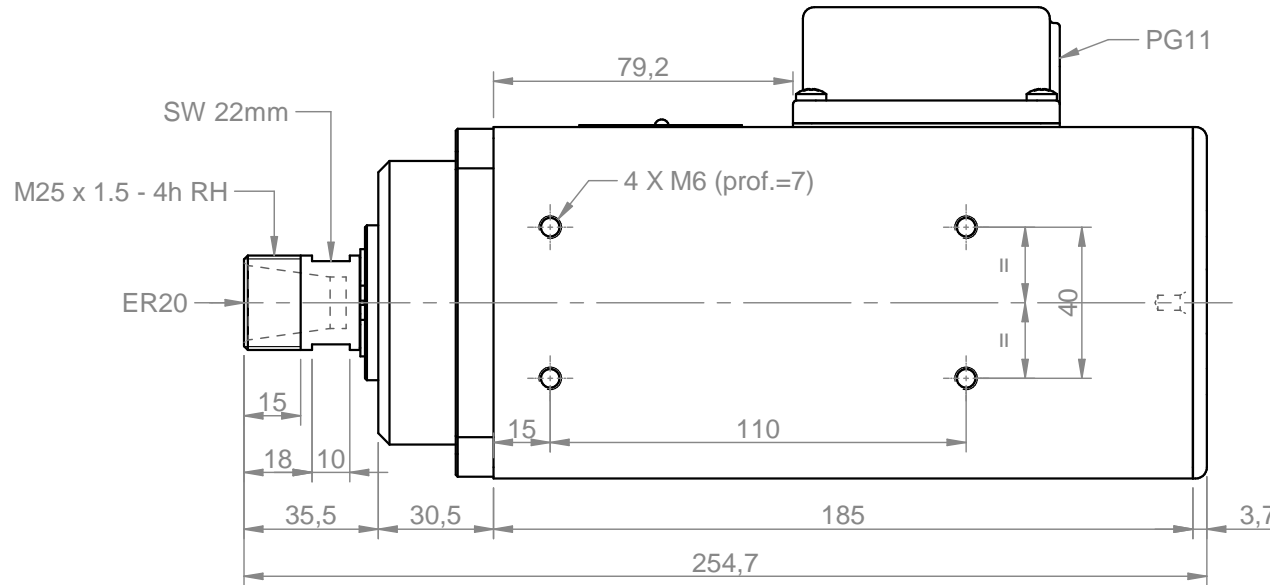
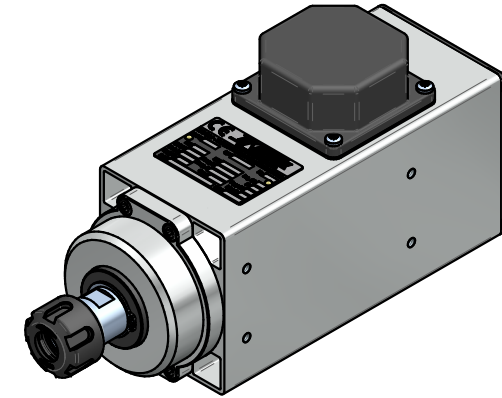
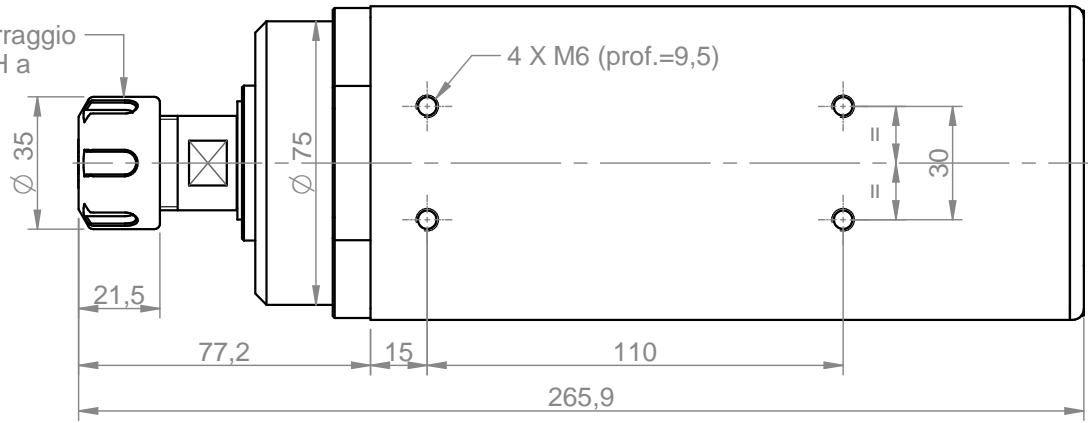


Ghiera serraggio  
GTS20 RH a  
disegno



Power [kW]	Duty Cycle	Base speed [rpm]	Base freq. [Hz]	Base voltage Δ [V]	Absorb. Δ [A]	Base voltage Y [V]	Absorb. Y [A]
1.1	S1	18000	300	220	5.0	380	2.9
Power [kW]	Duty Cycle	Base speed [rpm]	Base freq. [Hz]	Base voltage Δ [V]	Absorb. Δ [A]	Base voltage Y [V]	Absorb. Y [A]
Min speed [rpm]		Max speed [rpm]	Max freq. [Hz]	Protection	Ins. Cl.	Part number on nameplate	
6000		18000	300	IP54	F	COM41470270	
Balancing according to ISO 1940 - G2.5 @ 18000 rpm		Balancing type		tool type full key	tool type half key	Peso / weight	Title
						4.94 kg	4147-A-SB-P-ER20-RH
rev. n°	description			date	signature	Customer	Drawing code
01	Sostituito ventola da VEN0026 a VEN0010			10/02/2017	D. Bottarel	Catalogo	COM41470270
00	Emissione			15/02/2010	D. Bottarel	Tolleranze non quotate: UNI EN 22768 fH Smussi non quotati: 0.5 mm Rugosità secondo UNI ISO 1302	
drawn - date	approved - date	checked - date	sostituisce il		foglio / sheet	scala	
D. Bottarel - 10/02/2017	S. Perli - 10/02/2017	S. Perli - 10/02/2017	sostituito dal		1 / 1	1:2	

**TEKNOMOTOR**

Teknomotor S.r.l.  
Via Argenege 31, I-32038 Quero Vas (BL)  
www.teknomotor.com