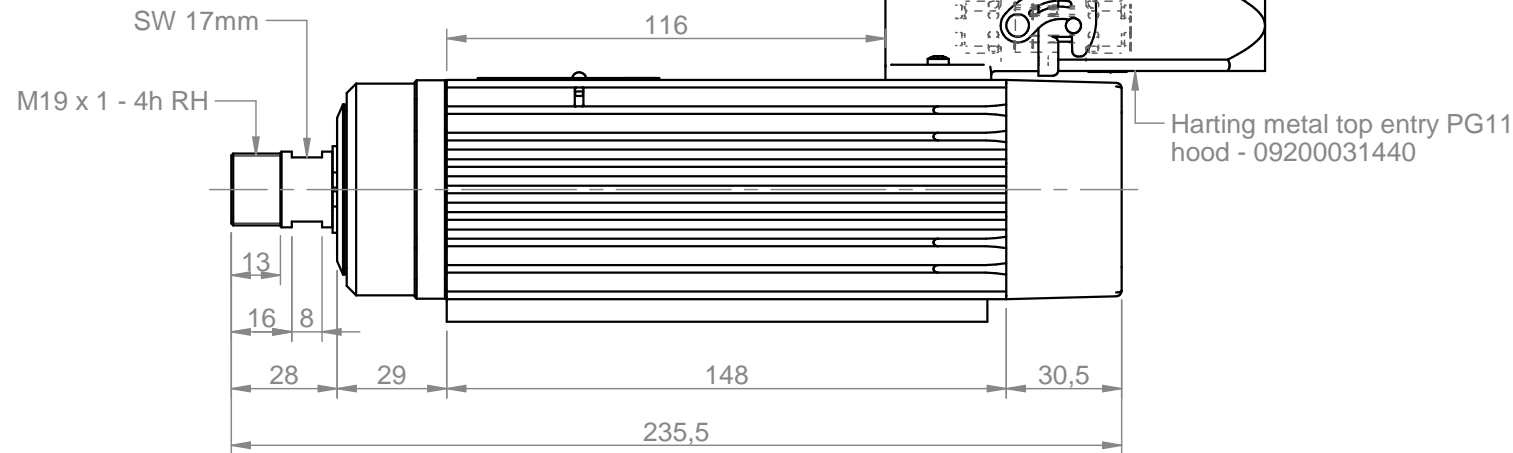


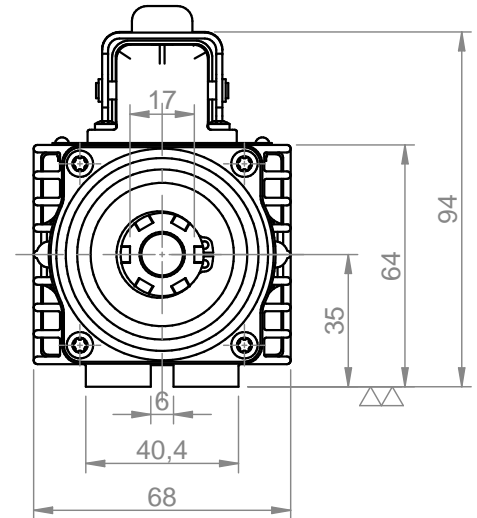
Harting HAN 3A 3P+E screw termination male insert - 09200032611

Harting metal angled bulkhead mounted housing - 09200030801



Harting HAN 3A 3P+E screw termination female insert - 09200032711

Harting metal top entry PG11 hood - 09200031440



Power [kW]	Duty Cycle	Base speed [rpm]	Base freq. [Hz]	Base voltage Δ [V]	Absorb. Δ [A]	Base voltage Y [V]	Absorb. Y [A]
0.6	S1	18000	300	220	2.7		
Power [kW]	Duty Cycle	Base speed [rpm]	Base freq. [Hz]	Base voltage Δ [V]	Absorb. Δ [A]	Base voltage Y [V]	Absorb. Y [A]
Min speed [rpm]		Max speed [rpm]	Max freq. [Hz]	Protection	Ins. Cl.	Part number on nameplate	
9000		21600	360	IP54	F	COMC0350060	
Balancing according to ISO 1940 - G2.5 @ 21600 rpm		Balancing type		cool type full key	cool type half key	Peso / weight 3.03 kg	
rev. n°	description			date	signature	Customer	Drawing code
00	Emissione			13/09/2013	D. Bottarel	Catalogo	COMC0350060
drawn - date						Tolleranze non quotate: UNI EN 22768 fH Smussi non quotati: 0.5 mm Rugosità secondo UNI ISO 1302	
D. Bottarel - 13/09/2013		approved - date S. Perli - 13/09/2013		checked - date S. Perli - 13/09/2013		sostituisce il sostituito dal	
folgio / sheet 1 / 1		scala 1:2		A4			



Teknomotor S.r.l.
Via Argenege 31, I-32038 Quero Vas (BL)
www.teknomotor.com

Title
C35-C-SB-P-ER16-RH

Customer
Catalogo

Drawing code
COMC0350060

folgio / sheet
1 / 1

scala
1:2

A4