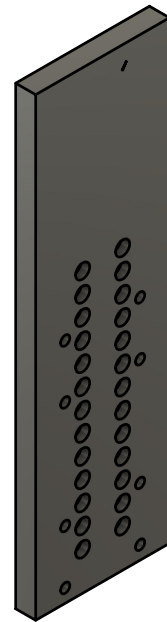
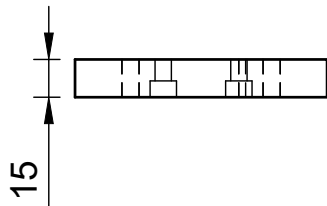
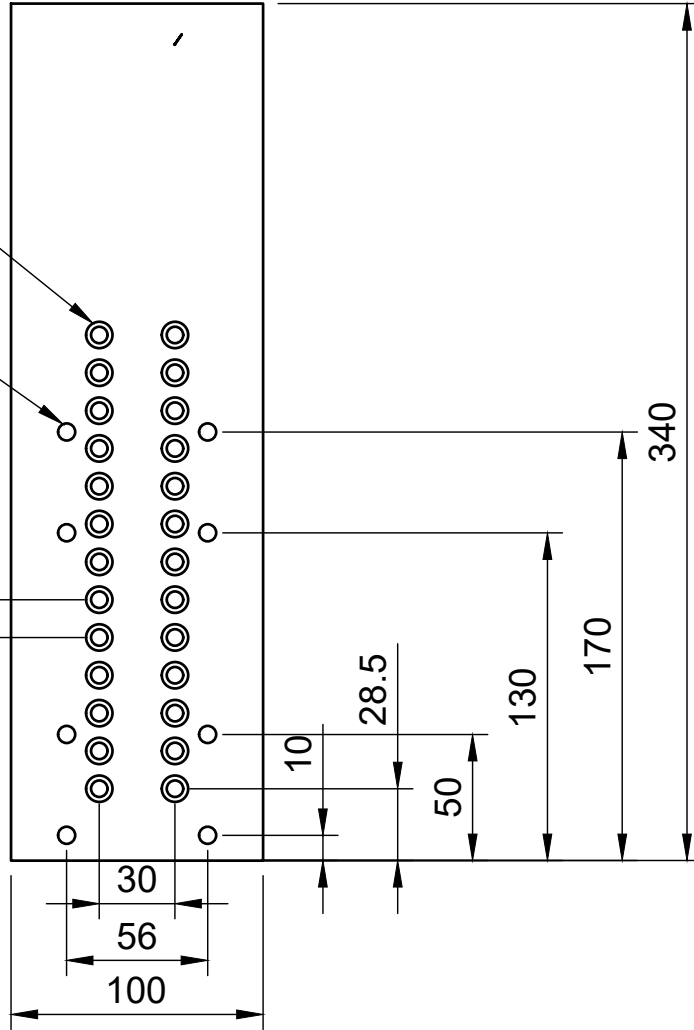


KM6

M8

15 Raster



Dept.	Technical reference	Created by <b>Sorotec GmbH 06.05.2021</b>	Approved by	
		Document type	Document status	
		Title <b>ZBP.AP0007</b> Adapterplatte HSD 1,1 kW und 2,2 kW für Alu-Line und Compact-Line für Alu-Line und Compact-Line	DWG No. <b>ZBP.AP0007</b>	
		Rev.	Date of issue	Sheet <b>1/1</b>